

# Premier SW Location - For Lease

Deer Creek Offices at Jefferson Corporate Center  
10822 W. Toller Dr., Littleton, CO 80127



COMMERCIAL REALTY LLC



## DEER CREEK OFFICES, LITTLETON, CO

This Building incorporates extremely flexible and customizable suite sizes, unparalleled visibility and building top signage visible from C-470. Convenient ingress and egress for tenants via an attractive, two story atrium lobby with showers and lockers and a unique water feature directory. Ken Caryl Business Center and Deer Creek Golf Course are just seconds away.

LEASING AGENT:  
Randy Swearingen  
720-274-9800 ext. 3  
M 303-521-7354  
randy@adcomrealty.com

### Property Features

- C-470 Highway Visibility!
- Excellent access via C-470 and Kipling
- Newer building with superb image
- Brilliant finishes inside and out
- Great views of the foothills and Denver
- Adjacent to Marriott Town Place Suites
- Close proximity to restaurants, hotels, retail, etc...
- Responsive Property Management and ownership



COMMERCIAL REALTY LLC

ADVISOR COMMERCIAL REALTY LLC  
383 Inverness Parkway, Suite 470  
Englewood, CO 80112

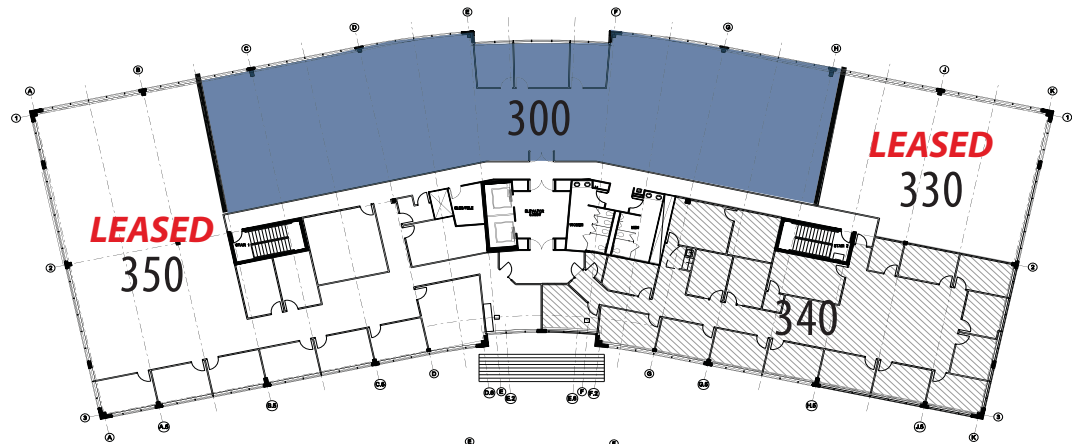
<u>Space Available:</u>	2,000 -11,239 SF	<u>Building Size:</u>	67,749 SF
<u>Lease Rate:</u>	Negotiable	<u>Lease Term:</u>	3 - 5 years
<u>Parking:</u>	5 cars per every 1,000 SF	<u>YOC:</u>	1999

### 3rd Floor

Suite 300

7,400 RSF

Divisible to 1,200 RSF

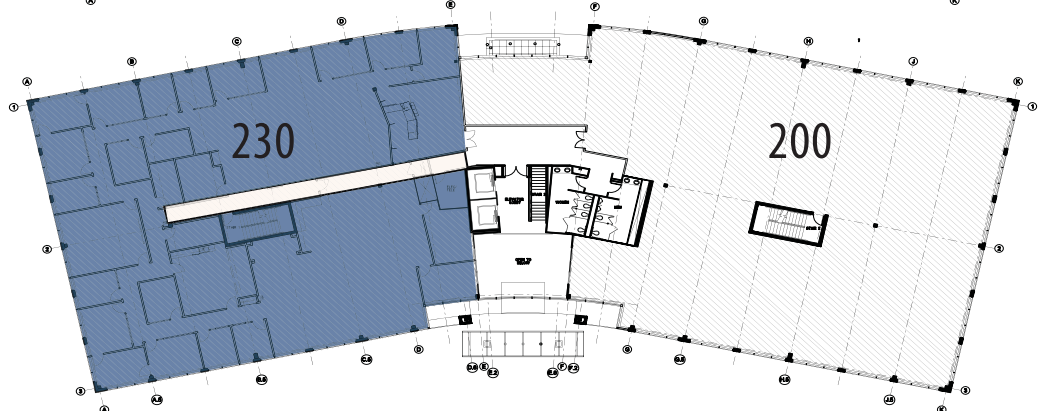


### 2nd Floor

Suite 230

11,239 RSF

Divisible



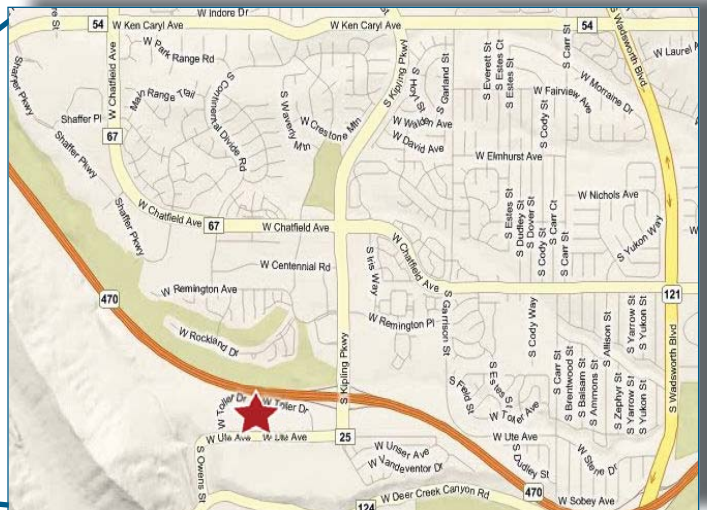
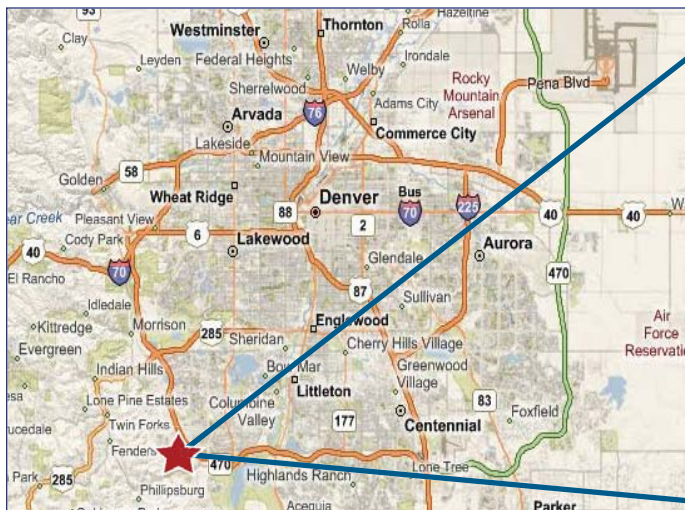
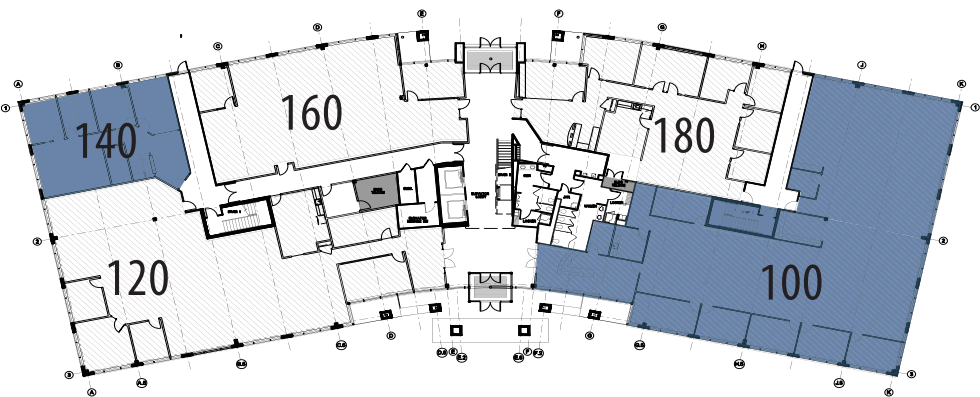
### 1st Floor

Suite 100

6,729 RSF

Suite 140

1,647 RSF



Listing Agent: Randy Swearingen  
720-274-9800 ext. 3  
M 303-521-7354

ADVISOR COMMERCIAL REALTY LLC  
383 Inverness Parkway, Suite 470  
Englewood, CO 80112

