

OFFICE / WAREHOUSE SPACE FOR LEASE

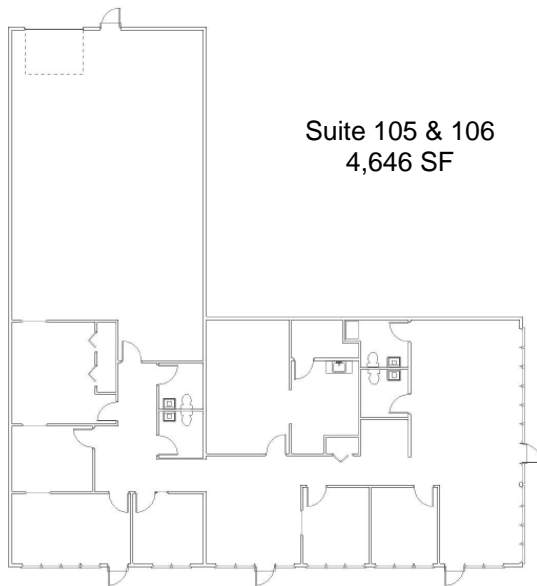
Air-conditioned Office & Warehouse • Up to 9,018 SF



MHM Building

8392 S. Continental Divide Rd.
Littleton, CO 80127

- 100% office unit available
- Located in the highly desired Ken Caryl Business District
- Quick & Easy Access to I25 & C-470



Suite	RSF	Comments
102	3,713 SF	4 ofcs, conf, 50% whse
104	2,331 SF	3 ofcs, lg open area, 30% whse
105	2,607 SF	3 ofcs, 50% whse
106	2,040 SF	100% office
107	2,040 SF	5 offices, 30% warehouse

- **LOADING:** 1 loading dock
3 drive-ins
- **PARKING:** 73 spaces
(2.5/1,000SF)
- **POWER:** 240v, 3p
- **CLEARANCE:** 10' x 12' roll up
14' clearance

Bill Hirschfeld
303-875-3195
bill@adcomrealty.com

Reese Davis
303-408-7166
lorissa@adcomrealty.com



COMMERCIAL REALTY LLC

Helping you make the right strategic moves in commercial real estate.

9800 MOUNT PYRAMID COURT, SUITE 400 • ENGLEWOOD, CO 80112 • MAIN (720) 274-9800 • DIRECT (303) 875-3195